

Manual Roll Handler (Horizontal Type)



AAK Handling Equipments Pvt. Ltd.

Plot No. 174, Sybly Industrial Area Abupur, NH-58, Muradnagar, Ghaziabad-201206,
Uttar Pradesh, India Ph.: +9101232-262931 E-mail : sales@aakhandling.com, www.aakhandling.com

AAK HANDLING EQUIPMENT'S

Roll Handler - Horizontal



Our roll handlers is manufactured using quality assured components that are procured from the certified vendors of the market. Our quality experts strictly test each machine and check all parameters to ensure its 100% safe and work perfectly. This equipment is trail and tested more than 1000 cycles in our factory. We designed and manufactured roll pallets, roll lifters and attachments to meet customer specific requirement. We have range of up to 1500 Kg capacity with lifting height up to 1600 mm.

It's handling a horizontal roll and use loading/unloading from machine. It's specially designed for printing, packaging and paper industry and steel roll. In this roll handler we have a "C" type shape steel for stand mast and a rubber strip to avoid any accident.

Features:

Most standard and popular model with capacity 1000/1500 kgs.

- Hand brake / drive hand pallet truck
- Easy 3 position control handle-- Raise, Lower, Neutral.
- Structural heavy duty steel construction.
- Powder coated structure and Integrated welded pump.
- Fork lowering speed is controllable, operated by hand control.
- Polyurethane wheels fitted as standard complete with break.

- Its Reduce time lost to personnel injuries and help increase your facility's productivity.

Wheels: Nylon wheel, Polyurethane wheel,

Full-function control handle with neutral

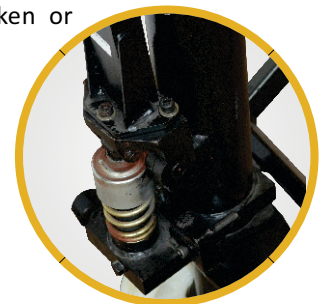


A few strokes of the large steering handle provides a full 1600 mm of lift. A convenient control lever has three positions: Raise, Neutral and Lower. The neutral position eliminates backpressure from the pump, allowing the handle to move freely. Lowering speed is controlled at all load capacities. The

handle is spring loaded and returns to a vertical position when released. The handle thickness and angled shape is designed for the most fatigue free operating position.

Hydraulic unit proven reliability

One of the most critical parts of a roll handler is the hydraulic pump. It must withstand thousands of lift/lower cycles, and yet be easy and inexpensive to repair. The Aak AMRH 1.0 is life tested to a minimum of 1,00,000 pump cycles. The enclosed lift pump means that there are no exposed parts such as valves or levers, which can be broken or damaged.



AAK HANDLING EQUIPMENT'S

Durable frame and articulating wheels

A robust, cross-braced frame provides unrivalled strength and durability. Steel forgings are used on the lift linkage. For easier handling and control, the AMRH has large 180 mm steer wheels. Steer and load wheels use high quality compounds that lower rolling resistance, provide long life, and are smooth and quiet in operation. To ensure continuous contact with the floor, the wheels articulate to ensure you never have the weight of the load on just one wheel. Hubcaps protect the bearing and steer axle from side impact damage and contamination.



Easy roll entry and exit



Easy roll entry and exit The fork tip and tapered on the platform design for the AMRH entry roller affords protection for the roller itself and the load wheels. The exit ramp, riser and the exit roller are engineered for long life and impact resistance. The combined effect for the operator is excellent entry and exit from roll handling, even when the roll handler is empty. A low 100 mm lowered fork height allows easy access to difficult or damaged pallets.

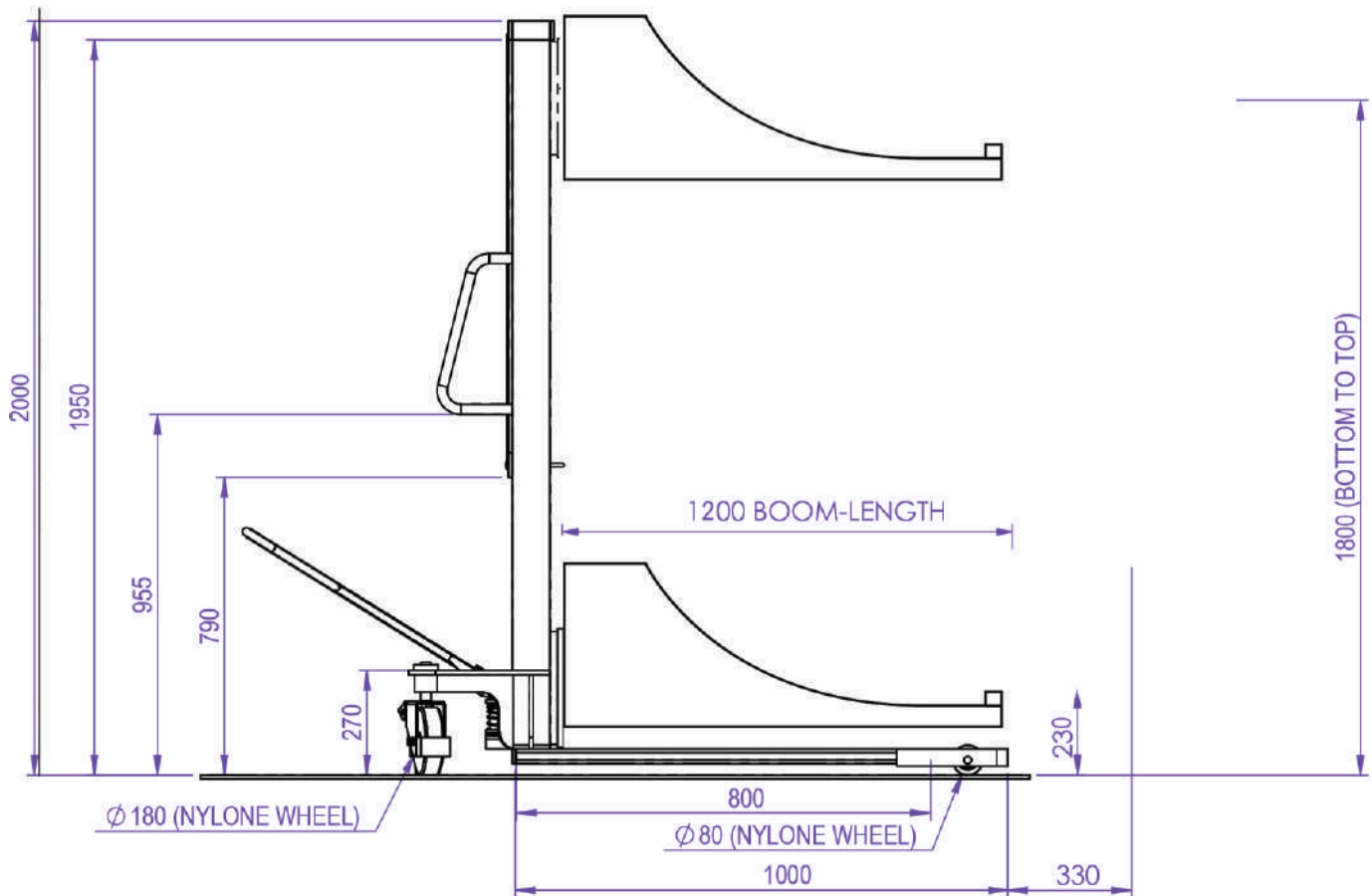
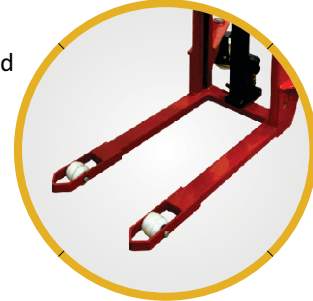
DESCRIPTION	UNIT	AMRH- 1016H	AMRH- 1516H
Max. Capacity	Kg	1000	1500
Overall Dimensions(LxWxH)	mm	1850 x 950 x 2050	
Carrier Length	mm	750	
Carrier Width	mm	700	
Min. Height	mm	100	
Max. Lift Height	mm	1600	
Load Wheel(Nylon)	mm	ø80 x 70	
Steering Wheel (Nylon)	mm	ø180 x 50	
Structure	Std.	Mild Steel	
Turning Radius	mm	~1350	
Overall Weight	Kg	~185	~195

AAK HANDLING EQUIPMENT'S

AMRH-1016 H

Long-term value

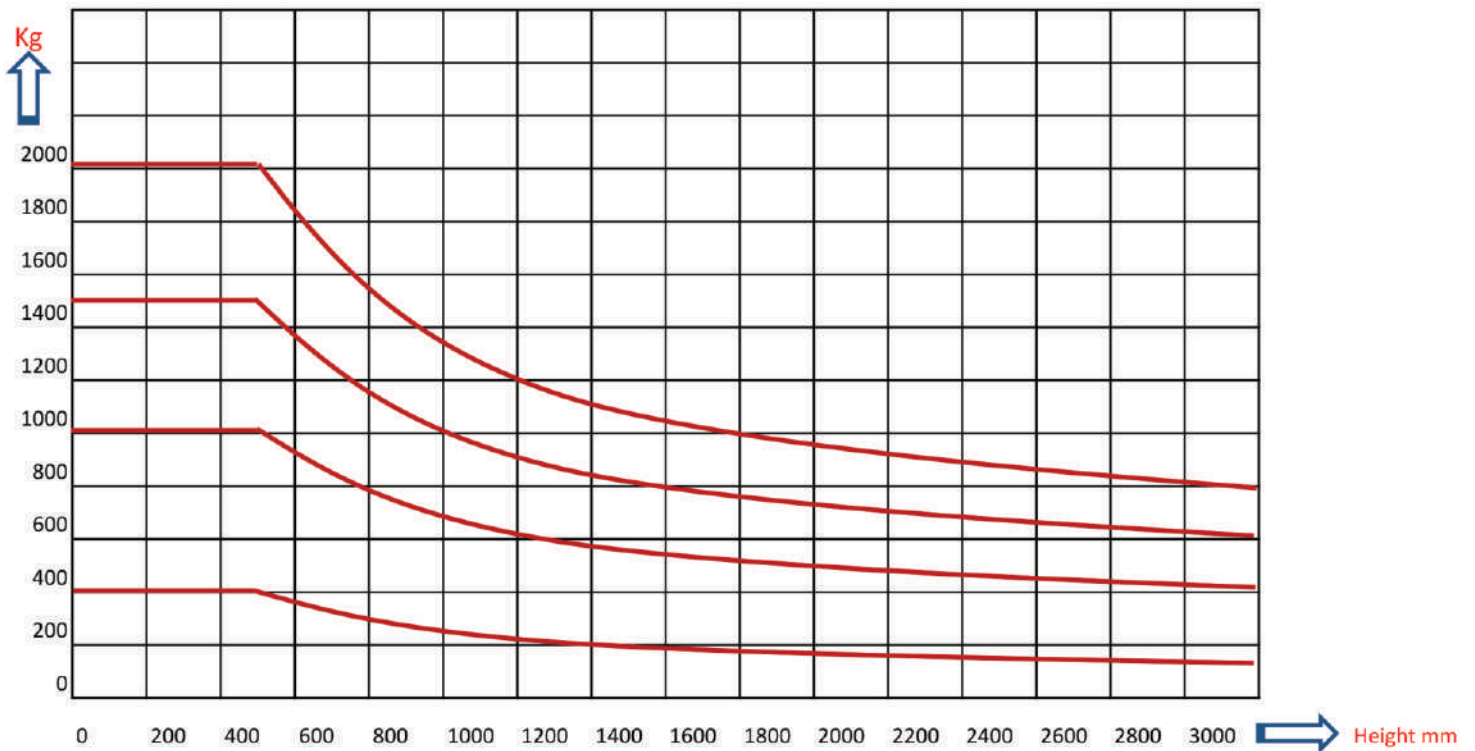
Aak utilizes high-grade steel combined with extra weld length and additional stiffening where necessary, especially in the area of apron pivot bosses. Thorough preparation of the assemblies before receiving a powder paint process ensures the highest levels of paint adhesion and long term protection.



AAK HANDLING EQUIPMENT'S

Handler Load Capacity Chart

Load Center @ 500 mm



- 1.5 Ton Handler lift 600 kg @ 3 M Height
- 1.0 Ton Handler lift 400 kg @ 3 M Height